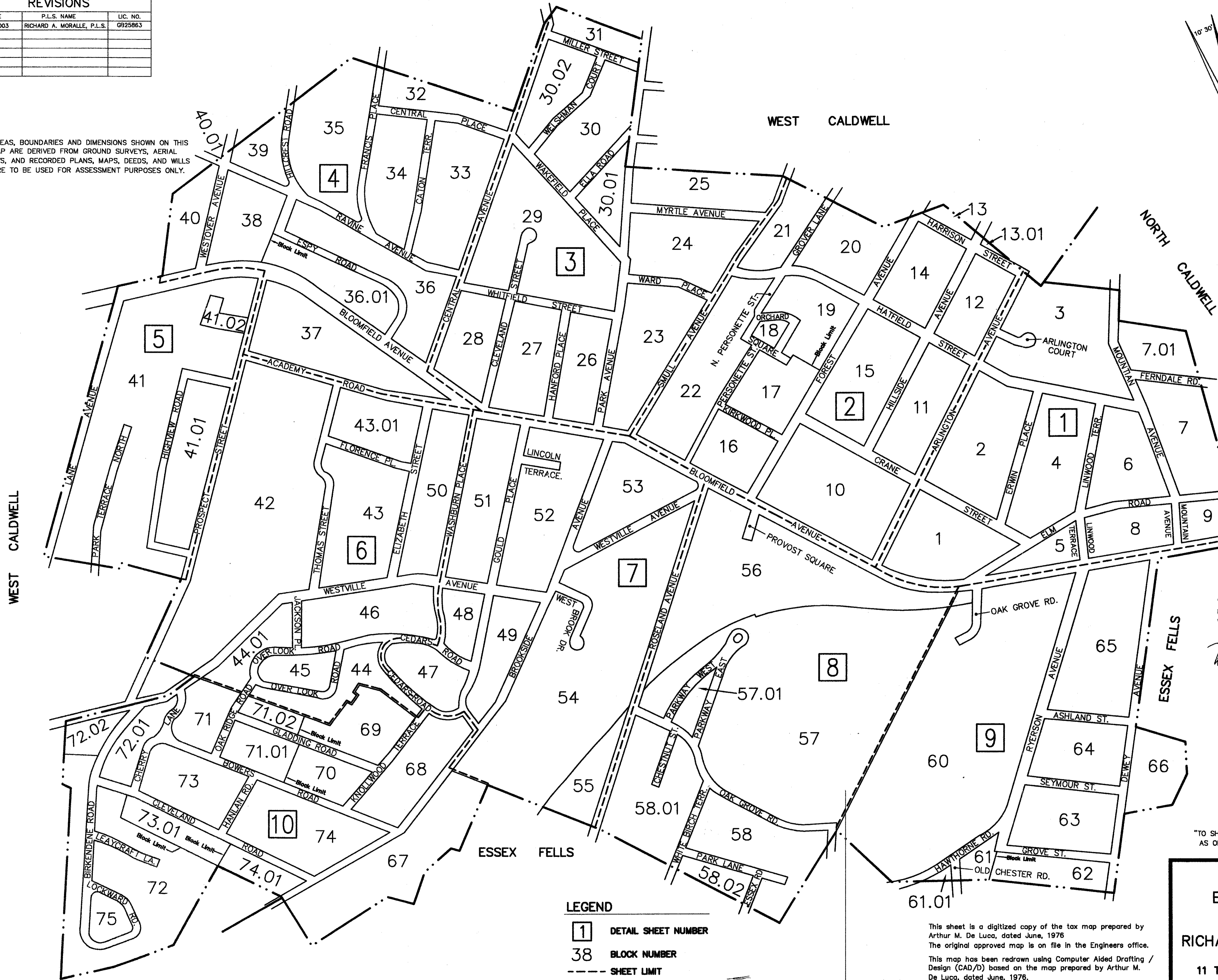


REVISIONS		
DATE	P.L.S. NAME	LIC. NO.
JUNE, 2003	RICHARD A. MORALLE, P.L.S.	0925863

THE AREAS, BOUNDARIES AND DIMENSIONS SHOWN ON THIS TAX MAP ARE DERIVED FROM GROUND SURVEYS, AERIAL SURVEYS, AND RECORDED PLANS, MAPS, DEEDS, AND WILLS AND ARE TO BE USED FOR ASSESSMENT PURPOSES ONLY.



THIS TAX MAP ALSO SERVES AS THE OFFICIAL HOUSE NUMBER MAP. HOUSE NUMBERS ARE SHOWN IN FRONT OF EACH LOT WITHIN THE STREET RIGHT-OF-WAY.

"I HEREBY CERTIFY THAT THIS MAP HAS BEEN REVISED UNDER MY IMMEDIATE SUPERVISION AND COMPLIES WITH THE LAWS OF THE STATE OF NEW JERSEY."

Richard A. Moralle
 RICHARD A. MORALLE, P.E. & P.L.S. Lic. No. 0925863.

APPROVED BY THE DIVISION OF TAXATION
 PROPERTY ADMINISTRATION
 AS A TAX MAP PURSUANT TO THE AUTHORITY OF
 N.J.S.A. 54:26-10 & 54:26-11
 SUPERVISOR, DIVISION OF TAXATION
James J. C... C.S.A.
 11/30/2004
 DATE: NOV 30 2004 SERIAL NO. 849

- LEGEND**
- 1 DETAIL SHEET NUMBER
 - 38 BLOCK NUMBER
 - SHEET LIMIT

This sheet is a digitized copy of the tax map prepared by Arthur M. De Luca, dated June, 1976. The original approved map is on file in the Engineers office. This map has been redrawn using Computer Aided Drafting / Design (CAD/D) based on the map prepared by Arthur M. De Luca, dated June, 1976.

TO SHOW CONDITIONS AS OF JUNE, 2003"

TAX MAP
BOROUGH OF CALDWELL
ESSEX COUNTY, NEW JERSEY
 SCALE: 1" = 300' JUNE, 2003
RICHARD A. MORALLE, P.E., P.L.S.
T & M ASSOCIATES
 11 TINDALL ROAD, MIDDLETOWN TOWNSHIP
 NEW JERSEY, 07748